



## Wetheral Drive Stanmore Offers over £800,000

A five/six bedroom house available with Davidson Frost-Wellings.

On the ground floor the house has a spacious and open plan kitchen/dining room with skylight and doors leading to the private rear garden ensuring lots of light throughout. There is also a double reception room with bay window offering excellent entertaining space, as well as a guest WC, shower room and a further room for use as a study or downstairs bedroom.

Upstairs the house has four double bedrooms, a fifth single bedroom and a large family bathroom.

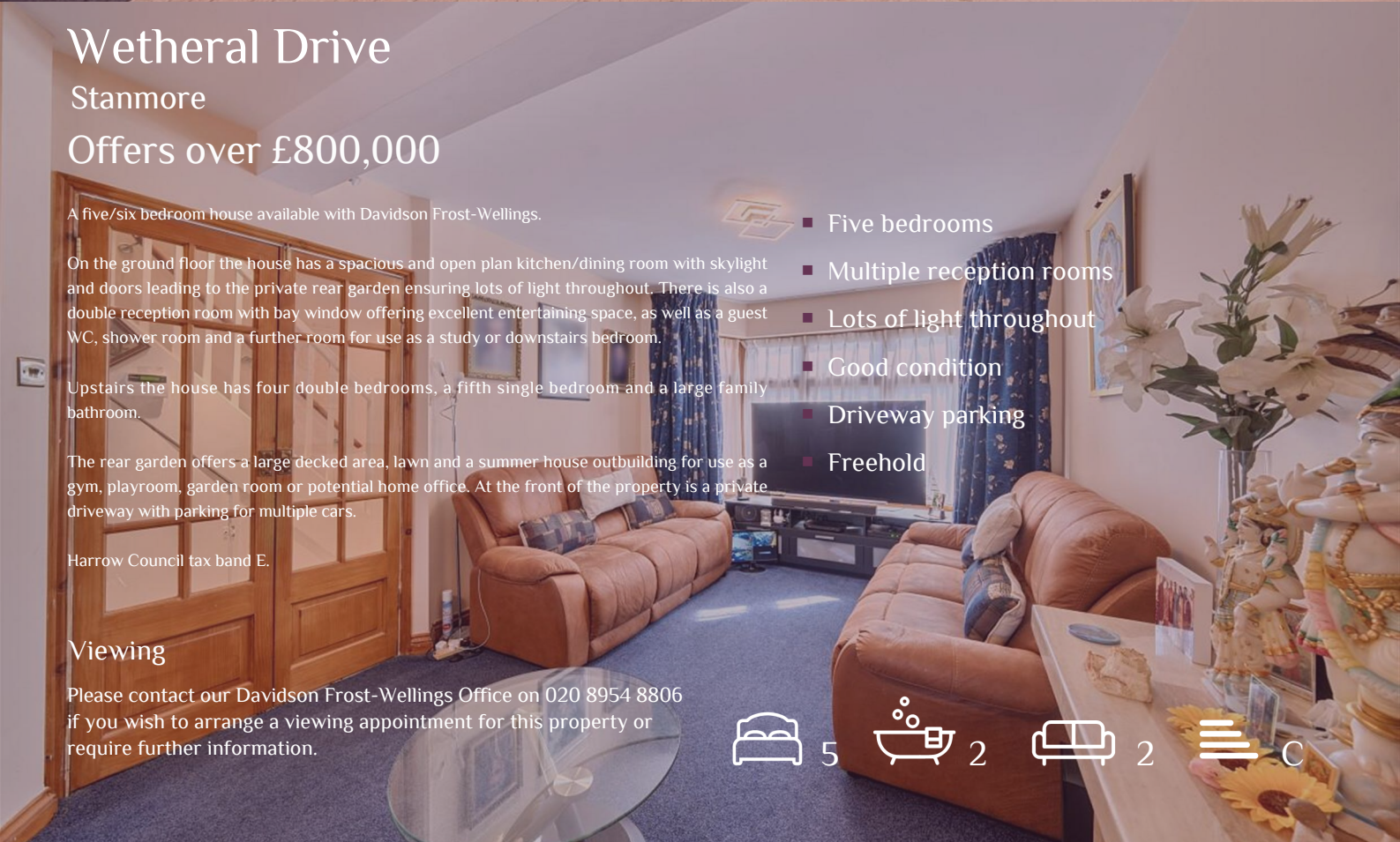
The rear garden offers a large decked area, lawn and a summer house outbuilding for use as a gym, playroom, garden room or potential home office. At the front of the property is a private driveway with parking for multiple cars.

Harrow Council tax band E.

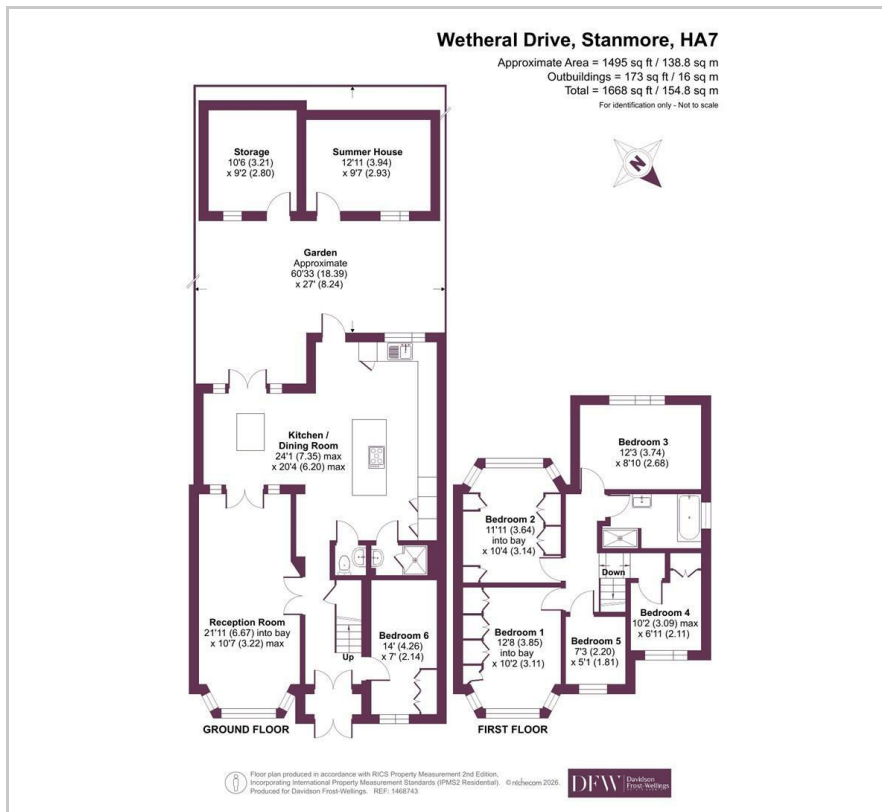
### Viewing

Please contact our Davidson Frost-Wellings Office on 020 8954 8806 if you wish to arrange a viewing appointment for this property or require further information.

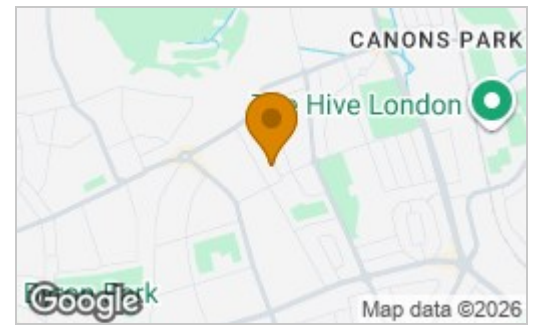
- Five bedrooms
- Multiple reception rooms
- Lots of light throughout
- Good condition
- Driveway parking
- Freehold



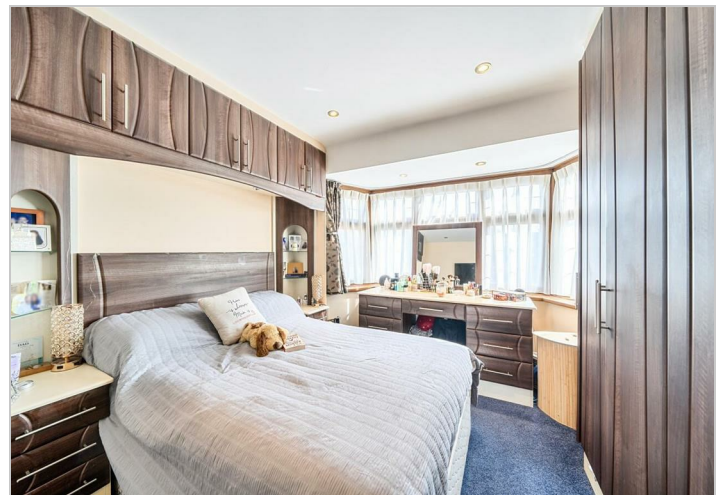
# Floor Plan



# Area Map



Energy Efficiency Rating		
	Current	Potential
<i>Very energy efficient - lower running costs</i>		
(92 plus) <b>A</b>		
(81-91) <b>B</b>		
(69-80) <b>C</b>	<b>76</b>	<b>80</b>
(55-68) <b>D</b>		
(39-54) <b>E</b>		
(21-38) <b>F</b>		
(1-20) <b>G</b>		
<i>Not energy efficient - higher running costs</i>		
<b>England &amp; Wales</b>	EU Directive 2002/91/EC	



These particulars, whilst believed to be accurate are set out as a general outline only for guidance and do not constitute any part of an offer or contract. Intending purchasers should not rely on them as statements of representation of fact, but must satisfy themselves by inspection or otherwise as to their accuracy. No person in this firm's employment has the authority to make or give any representation or warranty in respect of the property.